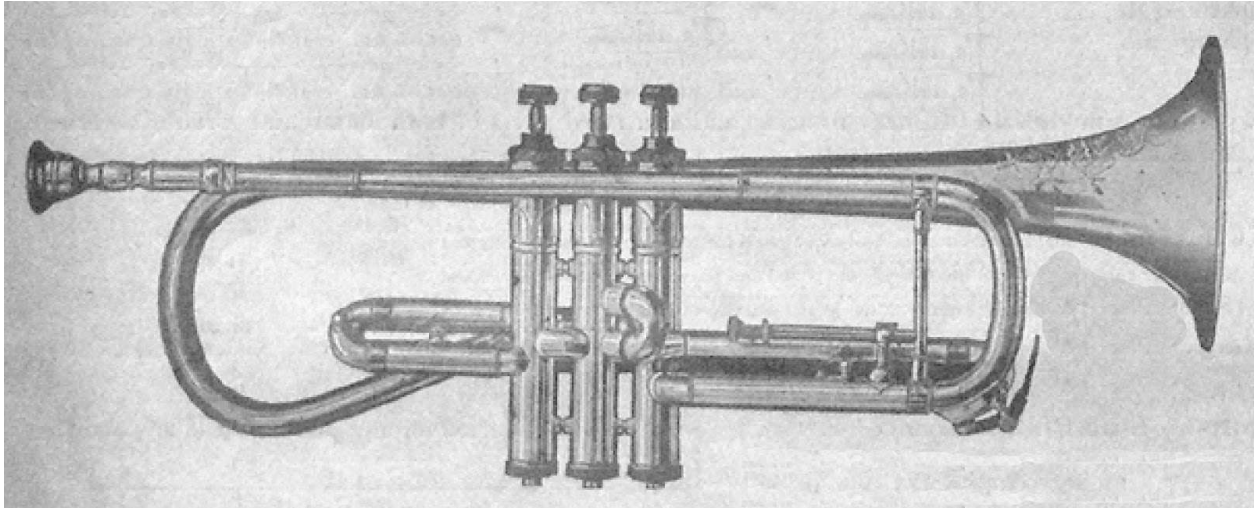


Buescher Trumpets

Model 5



Years made: 1909-1917

Serial # range: 8500-37000

Lowest # found: 14930, c.1911

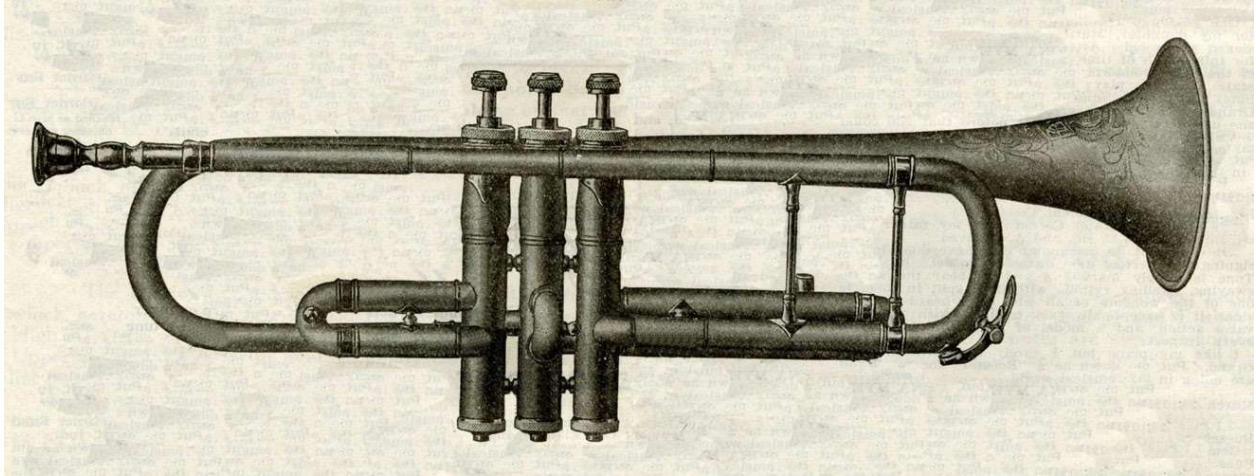
Highest # found: 37xxx, c.1917 (with Bb/A rotary valve in tuning slide; photo below)

Length = 17" Bell = 4.75" Bore =

Notes: shepherd's crook bell; Epoch valve design



Model 8 New England



Years made: 1913-1927

Serial # range: 18000-240000

Lowest # found: 23729 (1914)

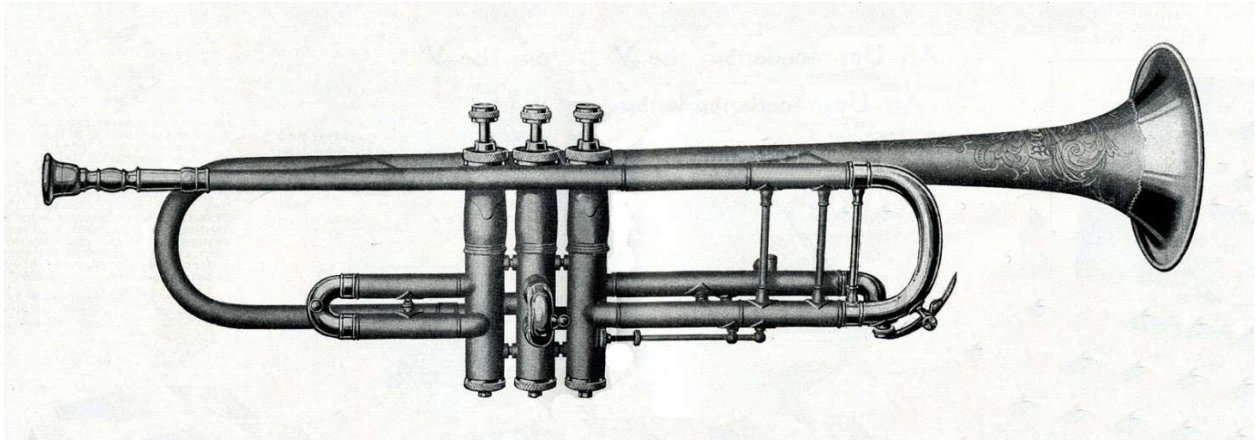
Highest # found: 236100 (1927; shown below)

Length = 18" Bell = 4.375" Bore = 0.440"

Notes: few found after the model 9 was introduced in late 1917; referred to as a "former model" in 1918 so the original design may have been dropped at this time



Model 9 Buescher Grand or Trickster



Years made: late 1917-1927

Serial # range: 41500-240000

Lowest # found: 41539

Highest # found: 238751

Length = 19.5" Bell = 4.25" Bore = 0.435"

Notes: this was a new model shipped to dealers in late 1917; in 1928 this changes to the model 202

#177772 (author's collection)



Model 10 Professional



Years made: 1922-1927

Serial # range: 103000-240000

Lowest # found: 103040 (1921)

Highest # found: 219540 (1927)

Length = 19.5" Bell = 4.5" Bore = 0.462"

Notes: the model 10 has a larger bore than the 10-22, and does not have the third slide ring for tuning

#144690 from 1923 below



Model 10-22 Symphony



Years made: 1922-1927

Serial # range: 110000-240000

Lowest # found: 114842 (10-22-R)

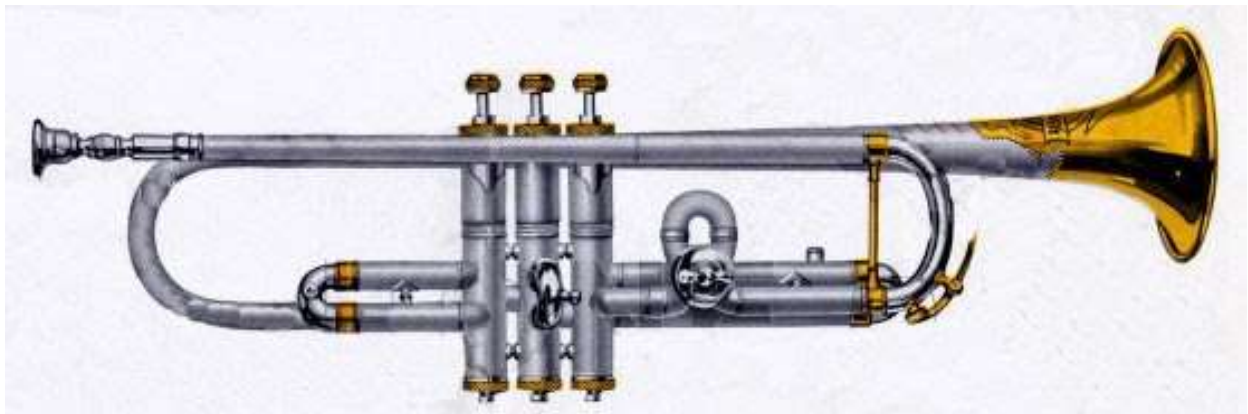
Highest # found: 239133 (late 1927)

Length = 19.5" Bell = 4.5" Bore = 0.443"

Notes: The three variations were the 10-22-A (#227295 above) with a Bb/A stop rod, the 10-22-B in Bb only, and the 10-22-R (#210525 below) with a Bb/A rotary valve.



Model 11 Wizard



Years made: 1921-1927

Serial # range: 95000-240000

Lowest # found: 117476 (1922)

Highest # found: 239344 (1927)

Length =

Bell =

Bore =

Notes:

#130305 from Horn-u-copia.net



Model 12 Symphony



Years made: 1922-1927

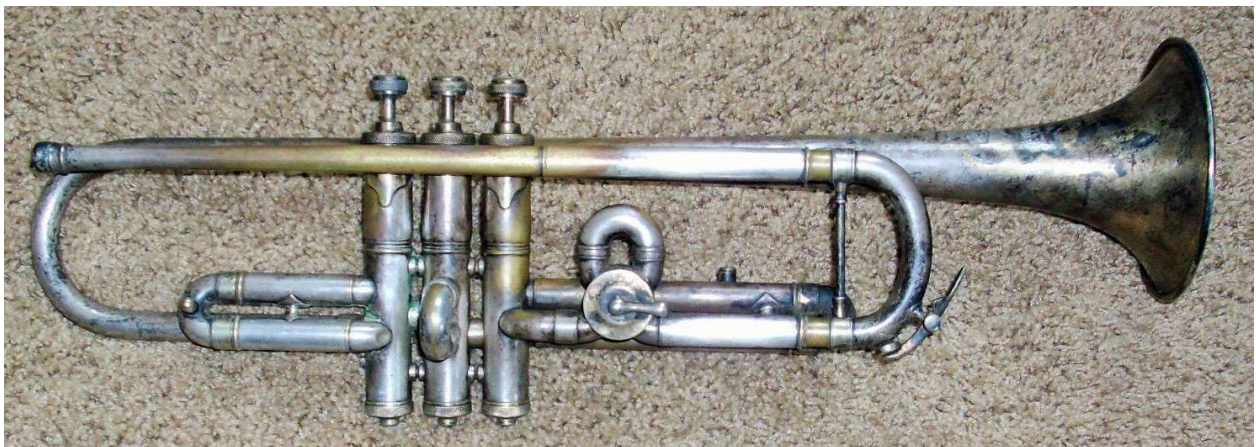
Serial # range: 110000-240000

Lowest # found: 119477 (1922, shown below)

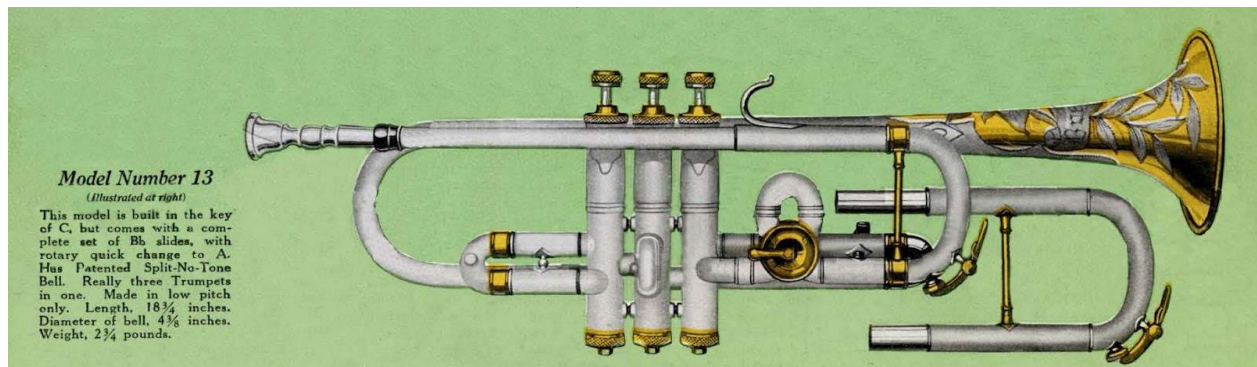
Highest # found: 138062 (1923, shown above)

Length = 19.5" Bell = 4.5" Bore = L

Notes: a very rare model



Model 13 Parlor Grand



Years made: 1924-1927

Serial # range: 150000-240000

Lowest # found: 169285 (1924)

Highest # found: 182247 (1925)

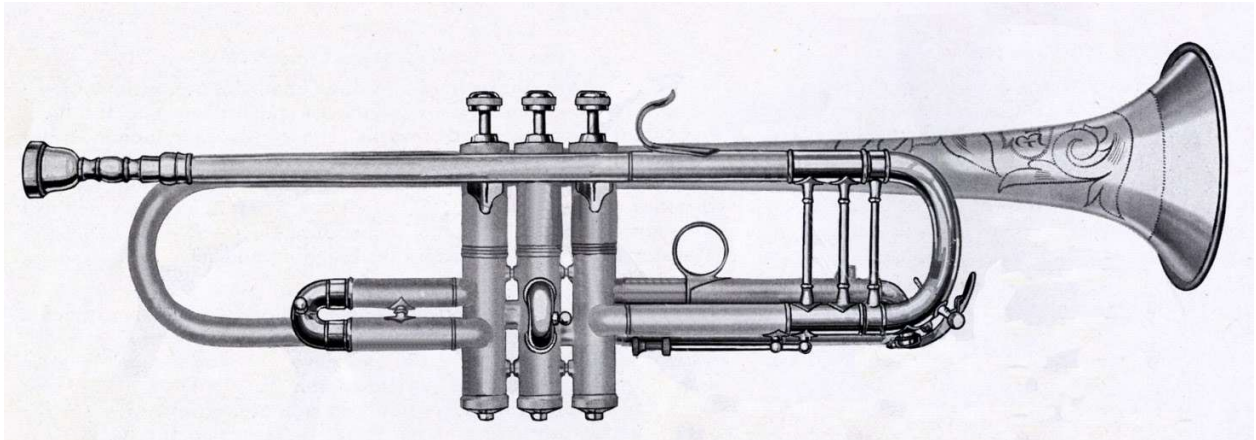
Length = 18.75" Bell = 4.375" Bore = 0.438"

Notes: built in the key of C with alternate slides for Bb

#173717 (author's collection)



Model 200 (old #8) New England



Years made: 1928-c1930

Serial # range: 240000-263000

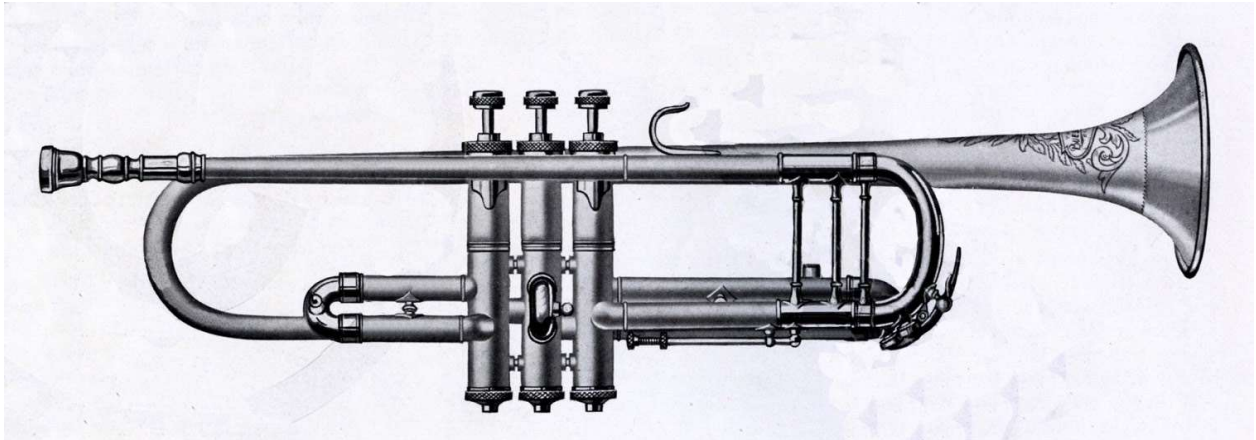
Only example found is #257819 below.

Length = 19.5" Bell = 4.5" Bore = S

Notes: This model was called "New England" due to its popularity in the Boston area.



Model 202 (old #9)



Years made: 1928-c1932

Serial # range: 240000-c269000

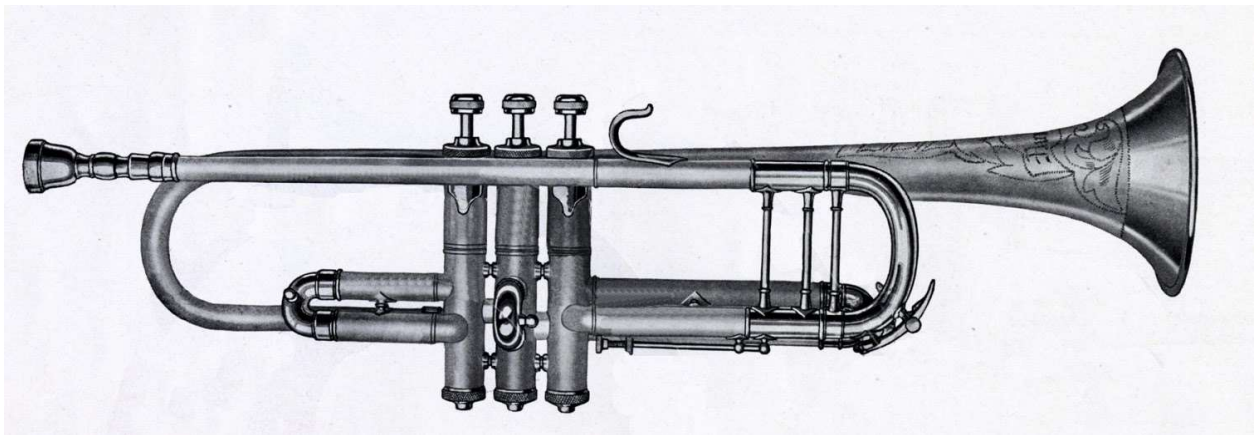
Lowest # found: 248304 (the only example found, shown below)

Length = 19.5" Bell = 4.375" Bore = S

Notes: a very rare model; 1928 catalog image above



Model 204 (old #10)



Years made: 1928-c1932 (1928 catalog image above)

Serial # range: 240000-c269000

The only example found is #247114 shown below.

Length = 19.5" Bell = 4.5" Bore = 0.462"

Notes: a very rare model



Model 205 Aristocrat



Years made: c1941-c1949

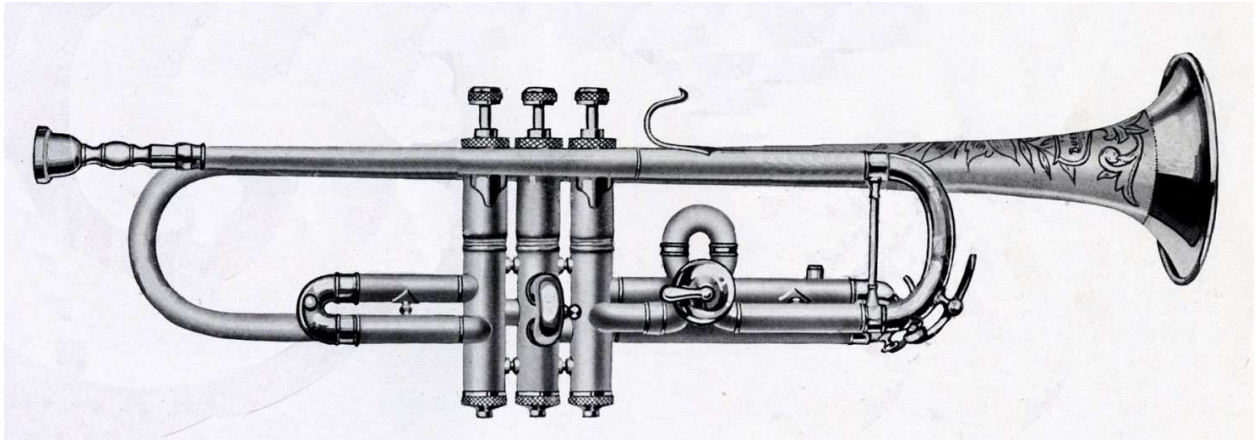
Serial # range: 298000-325000

Lowest # found: 300253 (1949)

Highest # found: 324970 (1949)

Specifications needed

Model 206 (old #11)



Years made: 1928-c1932 (1928 catalog image above)

Serial # range: 240000-c269000

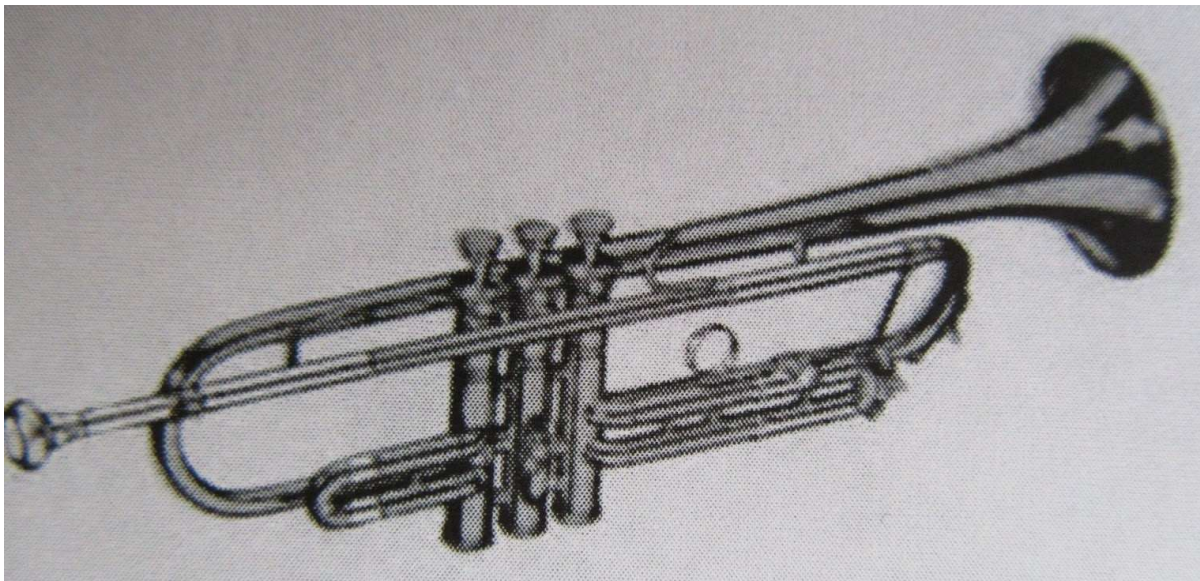
Only example found is #256011 below from 1929.

Length = 19.5" Bell = 4.375" Bore = S

Notes: rare model; Bb/A rotary valve



Model 207 Aristocrat



Years made: c1950-c1954

Serial # range: 325500-348000

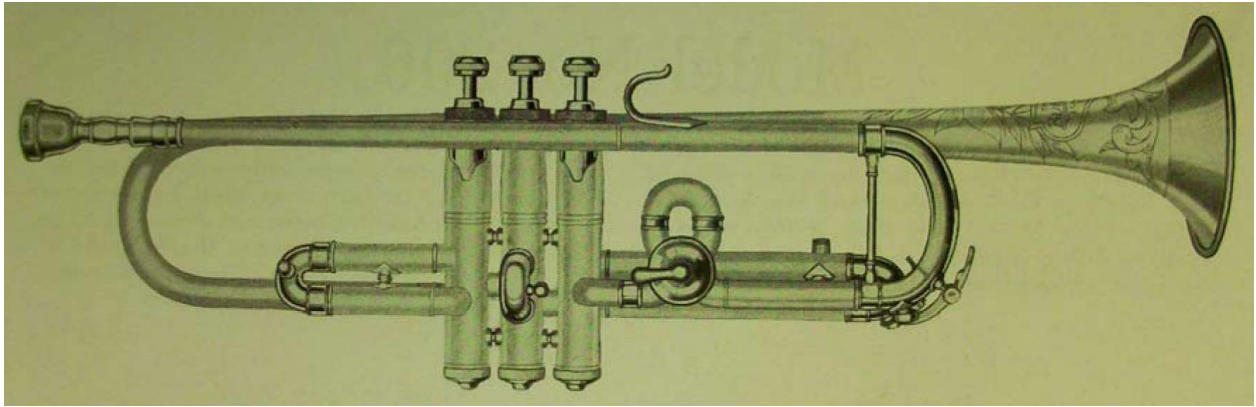
Lowest # found: 334826 (1952)

Highest # found: 339152 (1953)

Bore = 0.444"

Notes: This model is shown in the 1948 catalog but not in 1955.

Model 208 (old #12) "Favorite"



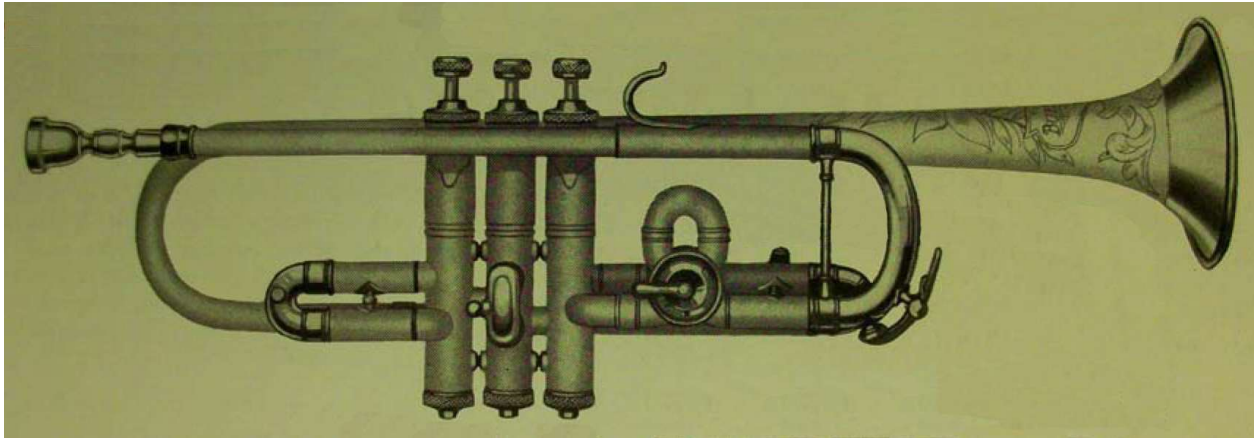
Years made: 1928-c1932 (1930 catalog image above)

Serial # range: 240000-269000

No existing examples have been found.

Length = 19.5" Bell = 4.5" Bore = L

Model 210 (old #13) "Parlor Grand"



Years made: 1928-c1935

Serial # range: 240000-278000

Only example found is #253xxx below (BuescherLoyalist.com).

Length = 18.75" Bell = 4.375" Bore = 0.438"

Notes:



Model 211 Aristocrat



Years made: 1938 only

Serial # range: 292000-292100

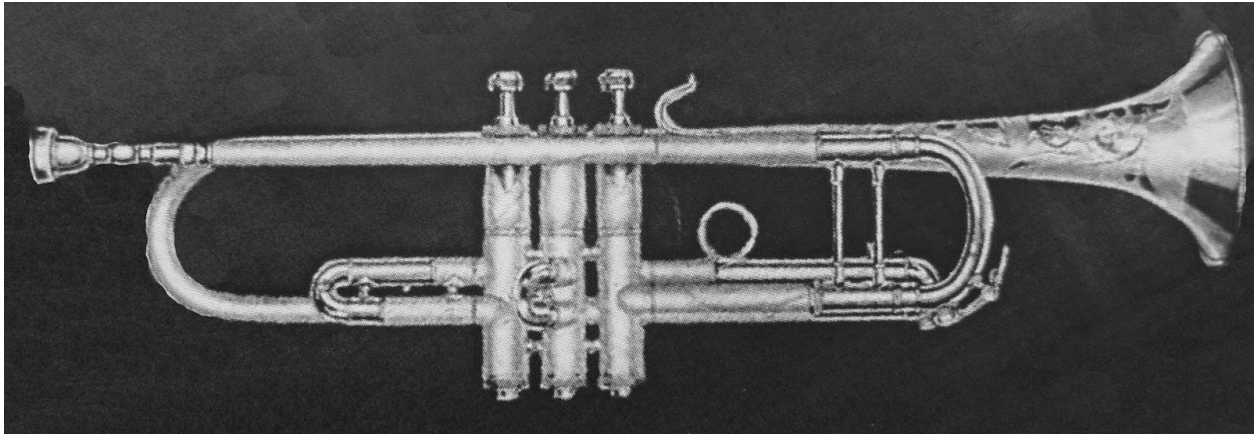
Only two examples found are #292055 (above) and #292057 (below).

Length = 18.5" Bell = 4.25" Bore = 0.438"

Notes: This is a model 220 with an added Bb/A rotary valve.



Model 212 (old #10-22-A) Symphony



Dates made: 1928-c1935

Serial # range: 240000-278000

Lowest # found: 244193 (1928)

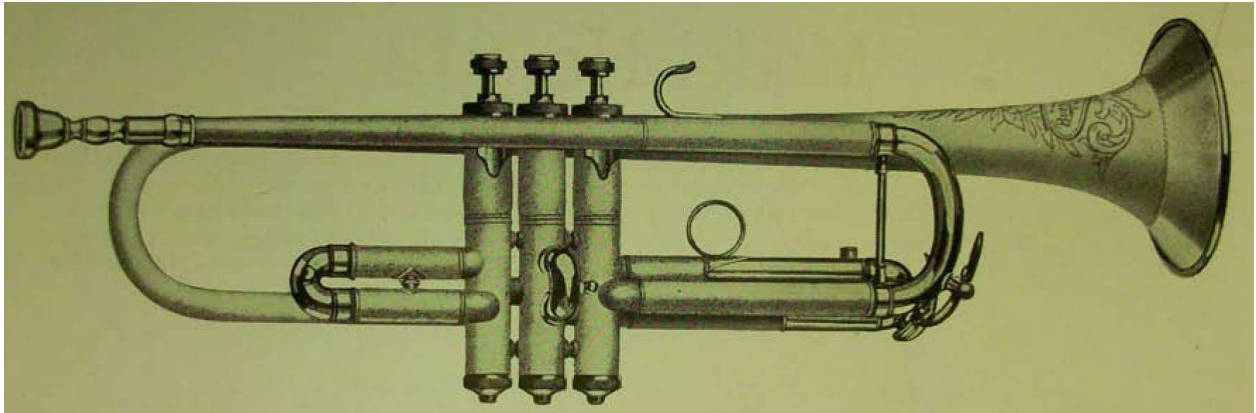
Highest # found: 252053 (1929)

Length = 19.5" Bell = 4.5" Bore = 0.443"

Notes: no examples found after 1929 but it is in the 1935 catalog



Model 214 (old 10-22-B) Symphony



Years made: 1928-c1930

Serial # range: 240000-263000

Lowest # found: 244193 (1928, shown below from BuescherLoyalist.com)

Highest # found: no other examples known

Length = 19.5" Bell = 4.5" Bore = M

Notes: not in 1931 catalog; 1930 catalog image above



Model 215 Custom Built



Years made: c1946-c1949

Serial # range: 307500-325500

Lowest # found: 309678 (1946)

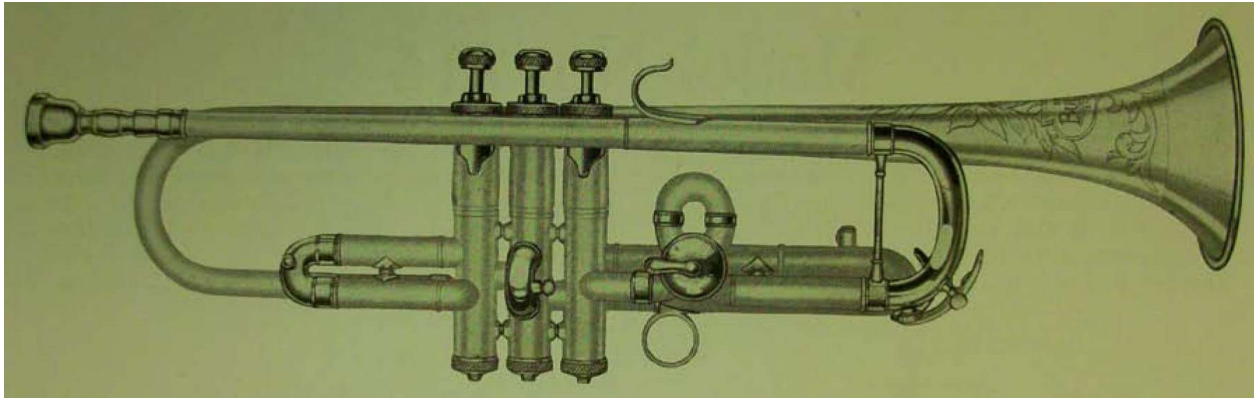
Highest # found: 323545 (1949; shown below from Horn-u-copia.net)

Specifications needed

Notes: Not found in the 1942 or 1954 catalogs.



Model 216 (old 10-22-R) Symphony



Years made: 1928-c1935

Serial # range: 240000-278000

Lowest # found: 247189 (1928 below from BuescherLoyalist.com)

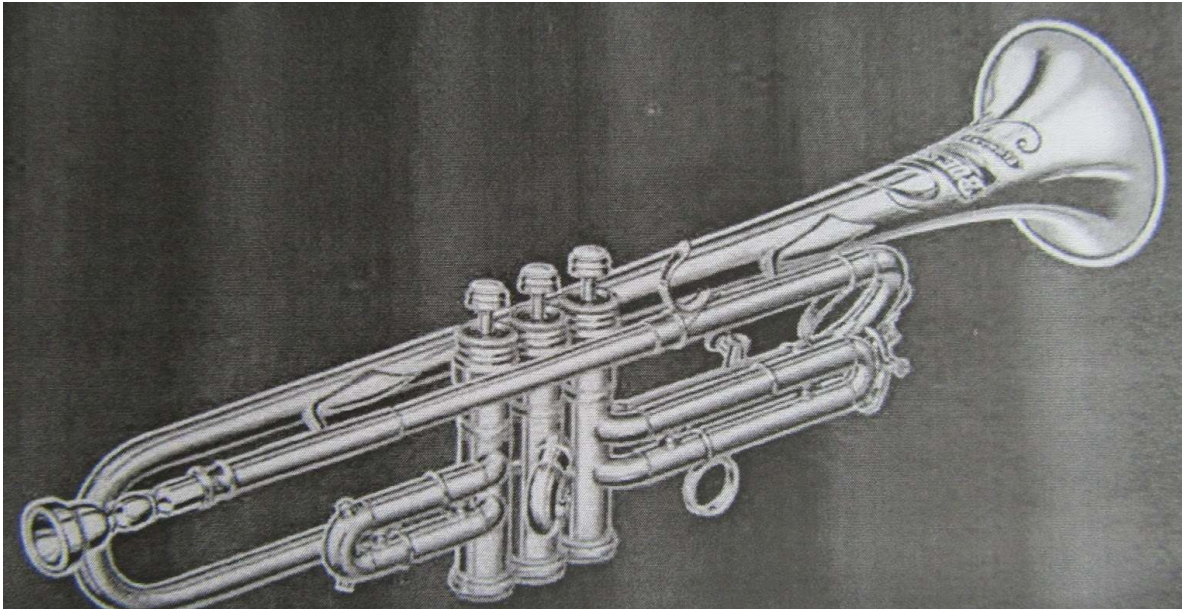
Highest # found: no other examples known

Length = 19.5" Bell = 4.5" Bore = M

Notes: last found in the 1935 catalog; 1930 catalog image above



Model 220 Aristocrat (replaced the 232)



Years made: 1939-c1941

Serial # range: 291000-300000

Lowest # found: 291000

Highest # found: 291024

Specifications needed

Notes: This model replaced the 232 in 1939 but was short-lived.



Model 222 Aristocrat Special



"ARISTOCRAT SPECIAL"

*The
SUPER
TRUMPET*

Guaranteed

THIS INSTRUMENT IS GUARANTEED TO BE THE BEST OF ITS KIND. THE BUESCHER TRUMPET COMPANY MAKES NO EXCEPTIONS. THE BUESCHER TRUMPET COMPANY, ELKHART, IND.

In every line of products there is always one that wears the crown of leadership—one that stands supreme above the others . . . Among trumpets, the new Buescher "Aristocrat Special" No. 222 holds indisputable reign as a superlative instrument, designed to provide the discriminating musician with an instrument that is in keeping with his ability. It is the ideal trumpet for professional musicians, teachers, band leaders, and soloists who are exceedingly critical in their judgment of an instrument.

The "Aristocrat Special" is perfectly voiced. A secret process in the treatment of the metal gives it a tone quality which is unusually beautiful—brilliant yet not brassy rich and resonant without losing the characteristic trumpet quality. It has an especially free blowing high register.

Super high quality construction includes nickel silver slides, the new Buescher improved type, short action valves with nickel silver pumps and Duo-Cone Non-Tilting springs. Built in B♭ only. Complete in beautiful case with all accessories.

MODEL No. 222

Finish A. Highly polished brass	\$ 95.00
Finish E. Silver plated, gold bell	115.00
Finish J. Gold plated, velvet finish	175.00
Finish K.—Gold plated, burnished	190.00
Finish L.—Gold plated, DeLuxe finish	235.00

If you prefer a trumpet with rotary quick change to A, the "Aristocrat Special" may be secured with a rotary-A slide, as illustrated, at a slight extra cost.

Brass finish	\$13.00
Silver finish	15.00
Gold finish	25.00



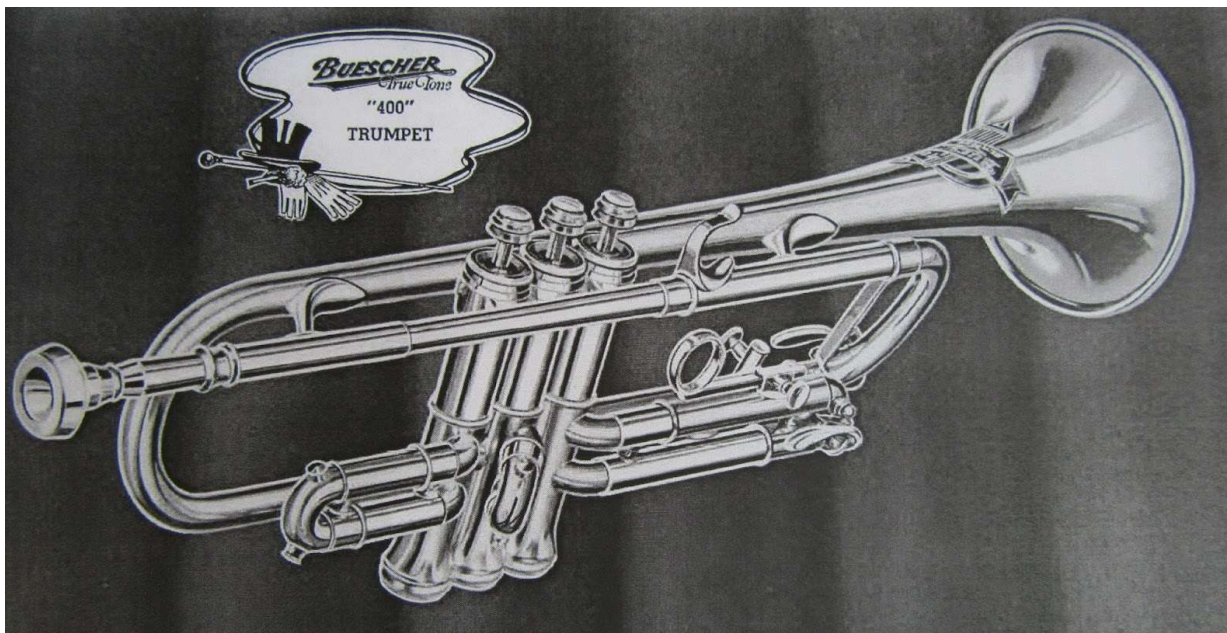
MAX I. KRULEE, Band Leader and Teacher Uses and Endorses the "Aristocrat Special"

"The Aristocrat Special", he writes, "is easy to blow, responds to my slightest effort, giving volume when wanted and tonal beauty at all times. It has as near perfect intonation as possible with a valve action that produces the fastest chromatic runs without a hitch, and range that permits intervals from low F-sharp to high E-flat without effort."



No examples have been found. Brochure above from BuescherLoyalist.com.

Model 225 / 150 The 400



Years made: 1937-1967

Serial # range: 282000-475000

Lowest # found: 282752

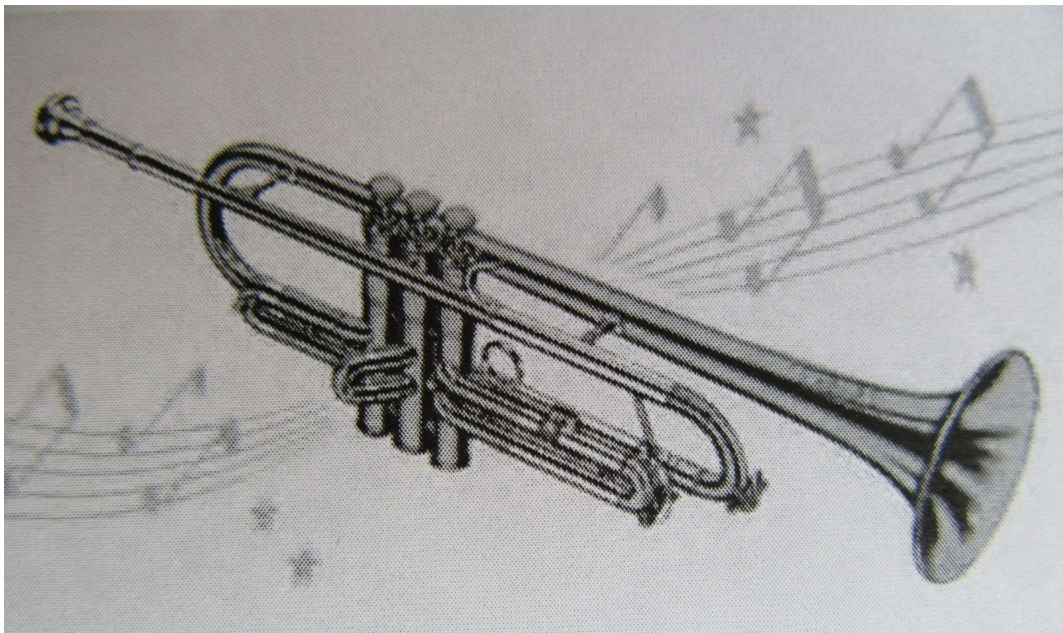
Highest # found: 463768

Length = Bell = Bore = 0.458"

Notes: Early ones have "Pat Apld For" made between 2-13-1937 and 10-4-1938. After this, they have the patent number stamp (starting around 293000).



Model 228 / 217 Lightweight 400



Years made: 1948-1956

Serial # range: 316500-356000

Lowest # found: 320800 (1948)

Highest # found: 352000 (1956)

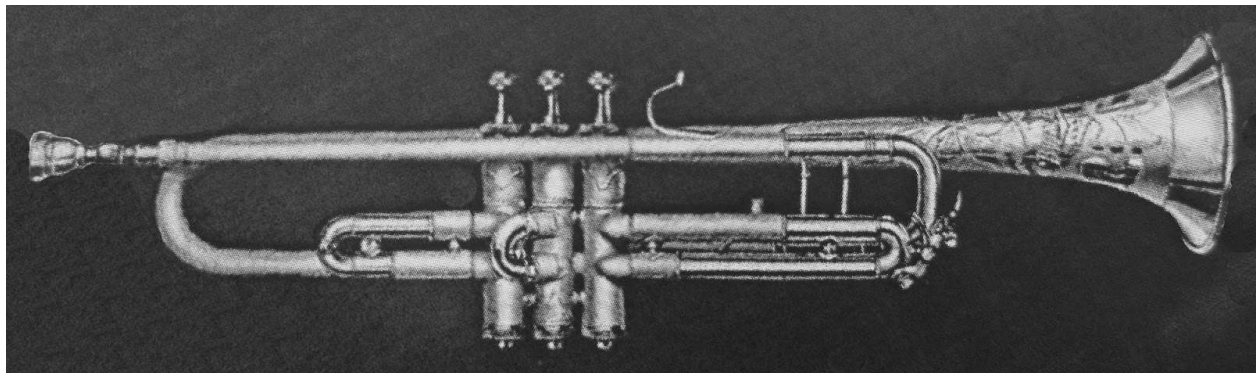
Specifications needed

Notes: The model number changed to 217 in 1951 around serial #332300.

Model 228 below with serial #332149, c.1951 (author's photo).



Model 230 / 232 / 234 Aristocrat



Years made: 1929-1938

Serial # range: 240000-294000

Lowest # found: 252132 (1929)

Highest # found: 291xxx (1938)

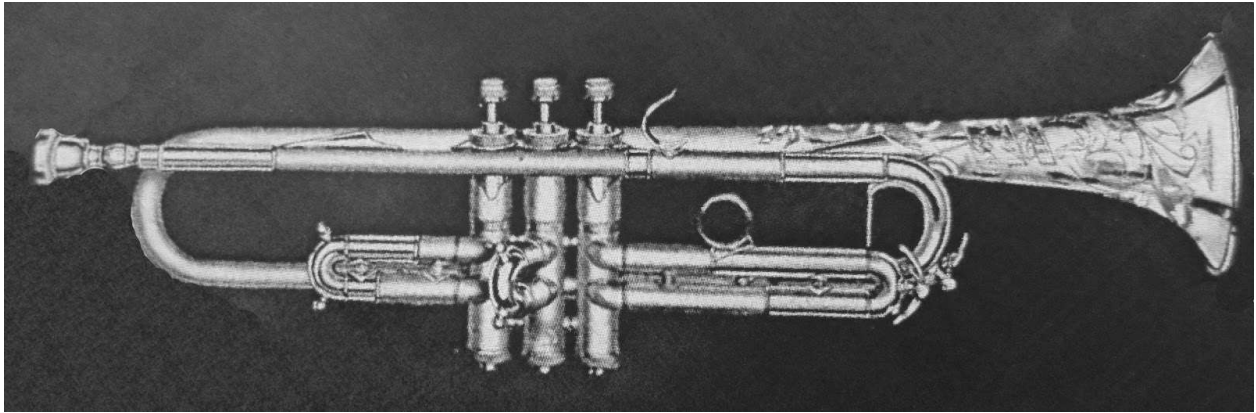
Length = 20" Bell = 4.25" Bore: 230 = 0.435"; 232 = 0.442"; 234 = L

Notes: All examples of this model were marked "2" in 1930.

#286860 model 232 from 1937



Model 235 / 236 Custom Built Aristocrat



Years made: 1932-c1945

Serial # range: 266000-307000

Lowest # found: 268633 (1932)

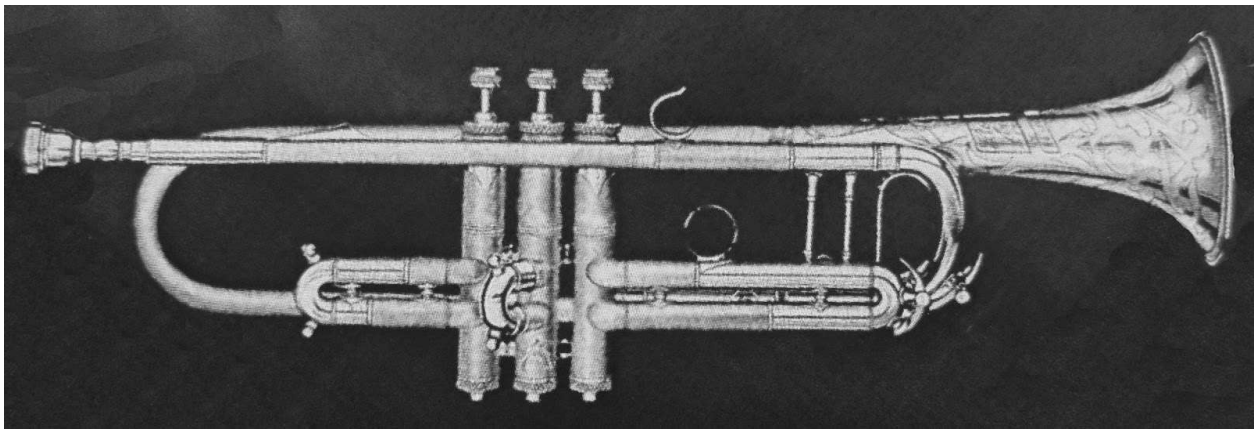
Highest # found: 306807 (1945; below, author's photo)

Length = Bell = Bore = M

Notes: This model is not shown in the 1935 or 1939 catalogs. The model 236 is the large bore version.



Model 237 / 238 Custom Built Aristocrat



Years made: 1932-1943

Serial # range: 263000-302500

Lowest # found: 266897 (1932)

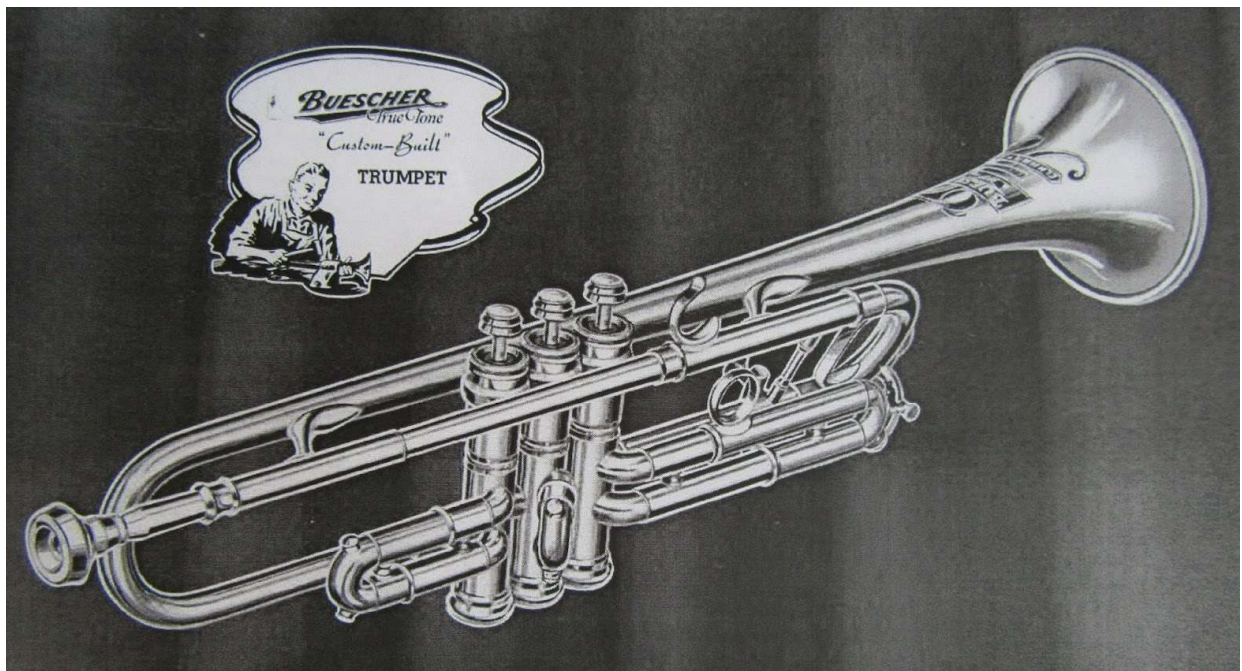
Highest # found: 302038 (1943)

Length = Bell = Bore =

Notes: The model 238 is the large bore version.



Model 240 Custom Built



Years made: c1938-c1941

Serial # found: 293112 (1938)

Specifications needed

Notes: This model is found in the 1939 and 1941 catalogs but not in 1948.

Model 244 Custom Built Aristocrat



Years made: 1955

Lowest # found: 349xxx

Highest # found: 350964 (above)

Specifications needed

Notes: Not found in 1954 catalog.

Model 260 / T160 Super 400



Years made: c1956-c1959

Serial # range: 352000-368000

Lowest # found: 354xxx (above)

Highest # found: 360065 (below)

Specifications needed

Notes: shown as model T160 in 1959



Model 135 Super Aristocrat

Years made: c1959-c1965

Lowest # found: 364179

Highest # found: 421320

Bell = 4.55" Bore = 0.458"

Model 136 Aristocrat

Years made: c1957-c1977

Lowest # found: 359958

Highest # found: 718445

Bell = 4.75" Bore = 0.460"